

Ireland / N. Ireland
**Charter and
 Protocols
 2020**



EAST BORDER REGION

Comprising
 Counties Louth, Monaghan and Meath,
 Newry Mourne and Down District,
 Armagh, Banbridge and Craigavon Borough
 Ards and North Down Borough



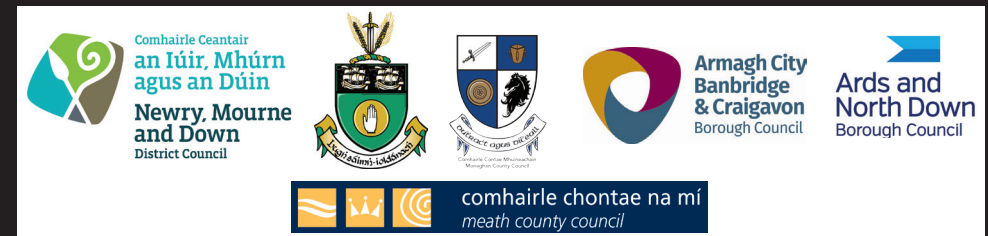
Ireland | Northern Ireland

EAST BORDER REGION

2 Monaghan Court, Newry, Co. Down
 Northern Ireland BT35 6BH

Tel: (NI) 028 3025 2684
 (RoI) 048 3025 2684

Email: info@eastborderregion.com
www.eastborderregion.com
[www.twitter.com/east_border](https://twitter.com/east_border)



An Roinn Gnóthaí
 Eachtracha agus Trádála
 Department of
 Foreign Affairs and Trade



Profile of the East Border Region

The East Border Region consists of the areas of its 6 constituent local authority members

- Ards and North Down Borough Council,
- Armagh City, Banbridge and Craigavon Borough Council
- Louth County Council
- Newry, Mourne and Down District Council
- Meath County Council, and
- Monaghan County Council.

As a region the East Border Region is distinctive as it represents, effectively, the coastal area between Dublin and Belfast, running from Gormanston, south of Drogheda in County Meath, to Knocknagoney, west of Holywood in County Down.

East Border Region also has a substantial East – West dimension with parts of County Monaghan being more than 75 kilometers from the Irish Sea.

The latest estimates place the total population of East Border Region at 992,500, accounting for just under 1 in 7 of the population of the Island of Ireland and its area, at 8,875 sq. kilometers is just over 10% of the land area of the Island of Ireland.

While Belfast and Dublin lie respectively to the north and south of the East Border Region, the area has significant urban population centres in towns such as Bangor, Drogheda, Dundalk, Navan, Newtownards, Newry City, Portadown, Lurgan and central Craigavon, Banbridge, Armagh City and Monaghan. However, the dominant landscape type in East Border Region is rural in nature and this mix of urban and rural areas is reflected in the average population density of the East Border Region, which is 104 persons per square kilometer compared to an Island of Ireland average of 79 persons per square kilometer.

The East Border Region is very well linked to national and international markets with the ports and airports of Belfast and Dublin lying just outside the Region and with strategic rail and motorway links between the two capitals running through and serving the Region.



East Border Region Charter

Local Authority Declaration of Commitment

We, the member authorities of the East Border Region hereby declare our joint commitment to continue to work together to address the issues arising from the Ireland/Northern Ireland border in order to protect and improve the prosperity of the citizens of the Region and the public and private services that they can access.

Experience across Europe shows that border regions tend to be less prosperous and to have poorer public and private services than more metropolitan regions. Experience also shows that these disadvantages can be reduced or overcome by active engagement of national, regional and local authorities and their public, private and community partners on both sides of a border.

The 6 member local authorities of the East Border Region namely: Ards and North Down Borough Council, Armagh City, Banbridge & Craigavon Borough Council and Newry, Mourne & Down District Council in Northern Ireland and Louth, Meath and Monaghan County Councils in the Republic of Ireland will continue to work with national and regional authorities, local communities and with public, private and community partners to achieve this end.

The authorities re-commit to the established aim of ‘a smart competitive, sustainable and inclusive cross-border Region’. This will be implemented by a programme of work covering 3 Priorities

- **A Smart, Competitive Region**
- **A Sustainable Region, and**
- **An Inclusive Region.**

Illustrative actions under the 3 Priorities are set out overleaf.

The principal mechanism by which these priorities will be delivered is East Border Region Ltd, a not for profit Company Limited by Guarantee, jointly owned by the 6 local authorities.

The priorities will be resourced by European, national, local authority and community funding.

EBR local authorities in Ireland and in Northern Ireland acknowledge and recognise that the United Kingdom’s departure from the European Union presents both new challenges and new opportunities. We commit to working together to overcome the challenges and to realise the opportunities arising from Brexit.

The accompanying Protocols outline the detailed working arrangements for the implementation of this Charter in the East Border Region.



Kyle Savage

East Border Region Ltd: Chairperson Kyle Savage



Kevin Savage

Armagh City, Banbridge and Craigavon: Lord Mayor Kevin Savage



Trevor Cummings

Ards and North Down: Mayor Trevor Cummings



D. Minogue

Louth: Cathaoirleach Dolores Minogue



David Gilroy

Meath: Chairperson David Gilroy



Colm Carthy

Monaghan: Cathaoirleach Colm Carthy



Laura Devlin

Newry, Mourne and Down: Chairperson Laura Devlin

Protocols governing Cross Border Co-operation in East Border Region

Context

This Charter outlines the detailed working arrangements for strategic, cross border co-operation between the six EBR member local authorities namely: Ards and North Down Borough Council, Armagh City, Banbridge & Craigavon Borough Council and Newry, Mourne & Down District Council in Northern Ireland and Louth, Meath and Monaghan County Councils in the Republic of Ireland.

The Charter is elected member led and represents a renewed mandate for East Border Region Ltd. to be a principal mechanism for continued cross border co-operation on behalf of the six member local authorities. Each member local authority has endorsed the Charter and these accompanying Protocols at full Council.

Purpose of the Charter

- To demonstrate a firm commitment to the principles of EBR Ltd and to provide an endorsement of EBR as the principal mechanism to facilitate cross border cooperation between the six member Local Authorities.
- To outline key themes and areas of mutual benefit under which cross border cooperation and joint actions could be pursued
- To define the arrangements for EBR to act as the mechanism for cross border cooperation and to outline supporting structures and decision-making procedures
- To enable continuous strategic development which positions the East Border Region as a Smart, Competitive, Sustainable and Inclusive Region.



EBR Board

Comprises 18 Directors made up of three elected members with cross party representation from each member Local Authority and 6 advisors at Chief Executive or nominated Director level, one from each Local Authority.

EBR Members Forum

Comprises 36 elected members, 6 from each member local authority (including the 3 Directors) and relevant officials.

EBR Audit and Governance Committee

Comprises 2 Directors of the Board, 2 representatives from the members forum, 2 senior officials from the member Local Authorities and 1 independent member with a financial background.

EBR Chief Executive Forum

The six Chief Executives from the member Local Authorities.

Thematic Working Groups

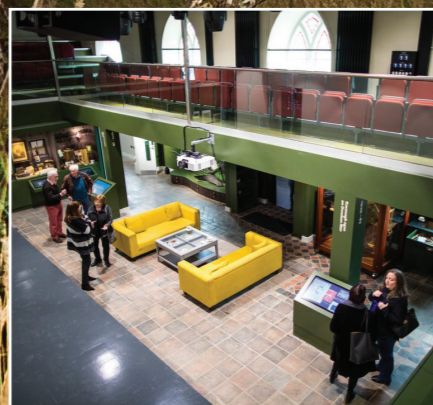
Comprising relevant Council members and officials from a range of sectors who will work on the implementation of the Priorities. Relevant stakeholders will also be engaged in the thematic working groups, as appropriate.

Communication

The Secretariat will be provided by East Border Region Ltd. It will be the responsibility of the Secretariat to convene relevant meetings, take minutes of proceedings, prepare reports and action points, coordinate public relations as required and provide administrative support.

Term of the Charter

The Charter will take effect on 31 March 2020.





EBR Organisational Profile

Established in 1976 EBR Ltd is one of the longest established local authority led cross border groups in Europe. It serves a population of just under one million people spanning six local authorities on the east coast of Ireland/ Northern Ireland.

EBR Ltd has played a central role in the administration of EU cross border funding on the Island of Ireland for over 25 years, administering over €150 million of funding to successfully delivered projects. In the current INTERREG VA Programme EBR is administering projects to the value of over €100 million.

This Innovative Charter for Cross Border Co-operation in the Region will take account of the fact that the UK is no longer a member of the EU and sets out future priorities for co-operation in the changed institutional context.

EBR is also active at the European level leading co-operation projects across the UK and Ireland and actively participating in European Networks as a long standing member of the Association of European Border Regions (AEBR)



Illustrative Actions under the 3 Priority Themes

Theme 1 A Smart, Competitive Region

- Research and Innovation
- Digital public and private services
- SME growth and competitiveness
- Development of the EBR tourism product
- Smart towns, villages and rural areas
- Best practice in smart development approaches



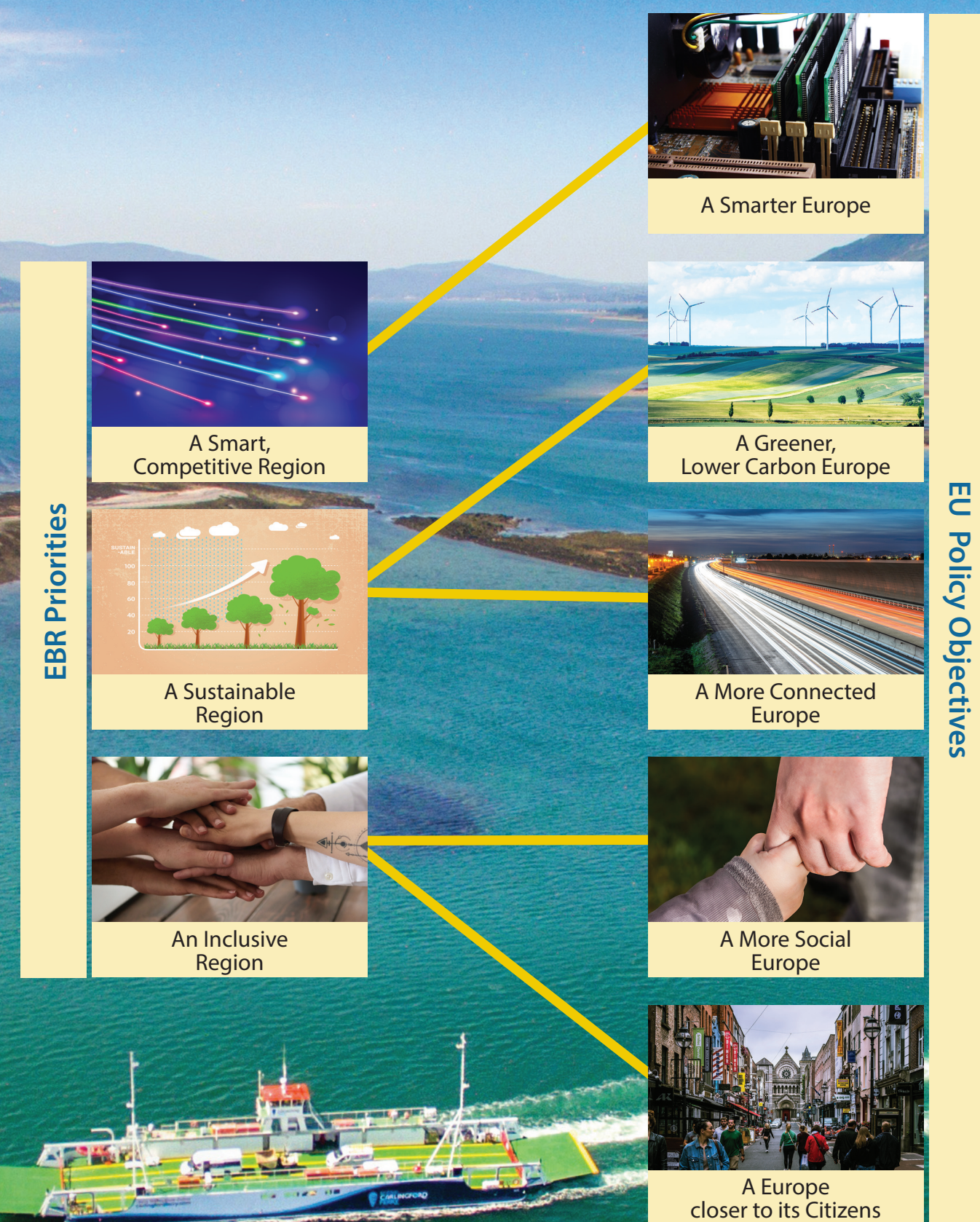
Theme 2 A Sustainable Region

- Addressing climate change
- Sustainable transport, including greenways and blueways
- Sustainable communities
- Sustainable energy and energy efficiency measures
- Waste management, the circular economy
- Biodiversity
- Coastal management

Theme 3 An Inclusive Region

- Tackling social exclusion
- Tackling labour market exclusion, by providing new opportunities and upgrading skills
- Improving social, community and educational outcomes
- Tackling health issues (including mental health)
- Recognising and celebrating cultural diversity
- Developing new structures for involving local people in decision-making for their communities
- Cross-border sharing of approaches to issues such as social inclusion and community cohesion

Relationship between EBR Priorities and EU 5 Policy Objectives 2020–2027



In addition to drawing upon EU funds, EBR will also access national, regional, private and community funds as appropriate to particular projects.